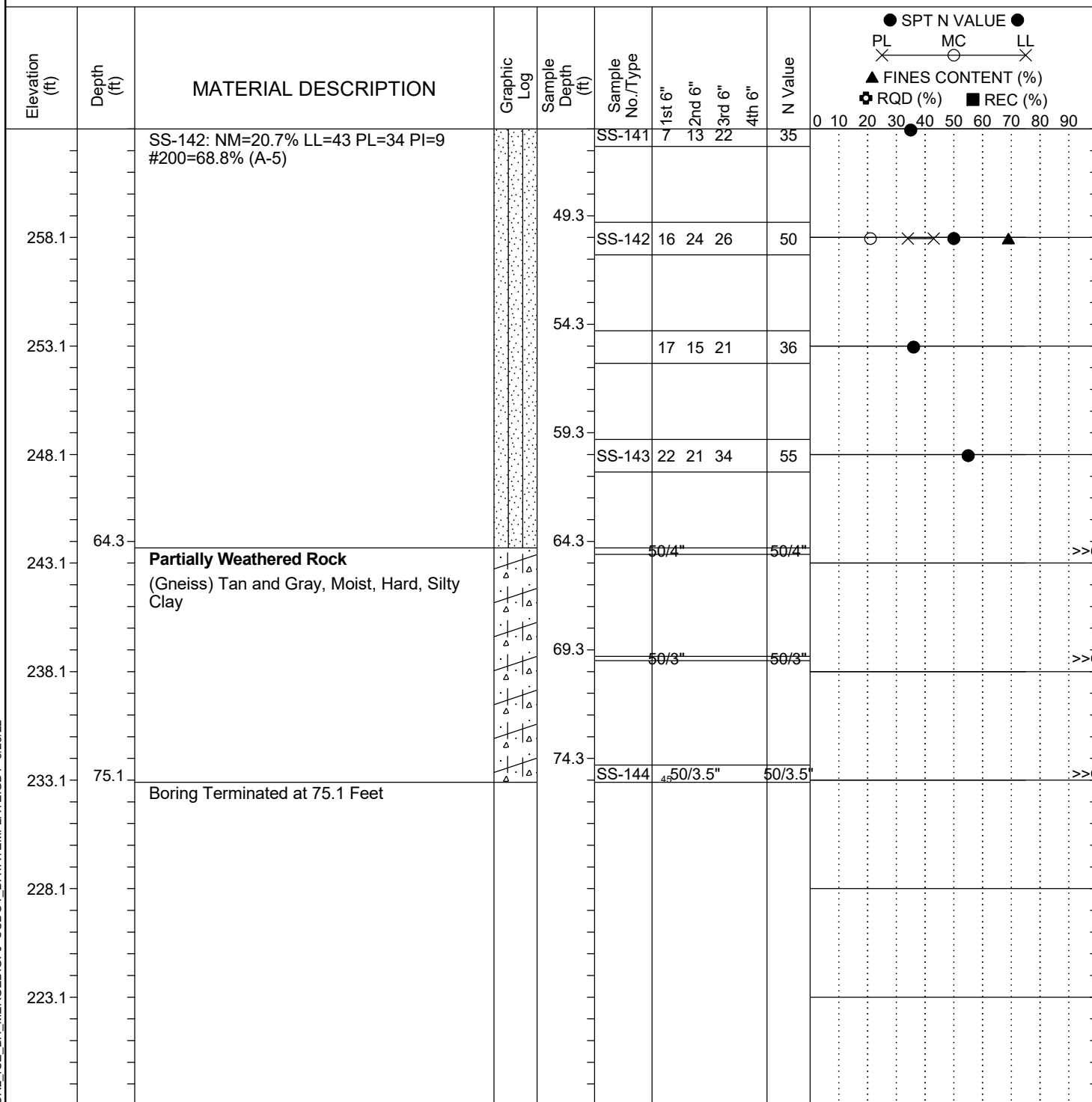


Project ID:		P039719			County:		Richland		Boring No.:		G-124					
Site Description:		Carolina Crossroads Phase 2								Route:		Broad River Rd.				
Eng./Geo.:		C. McIlroy		Boring Location:		614+58		Offset:		13 LT		Alignment:		US176WB		
Elev.:		308.1 ft		Latitude:		34.03945079		Longitude:		-81.09359924		Date Started:		3/15/2022		
Total Depth:		75.1 ft		Soil Depth:		75.1 ft		Core Depth:		N/A ft		Date Completed:		3/16/2022		
Bore Hole Diameter (in):			2.25		Sampler Configuration			Liner Required:			Y (N)		Liner Used:		Y (N)	
Drill Machine:		D-50 #435		Drill Method:		RW		Hammer Type:		Automatic		Energy Ratio:		84.4%		
Core Size:		N/A		Driller:		P. Mattis		Groundwater:		TOB N/A		24HR		FIAD		



LEGEND

SAMPLER TYPE		DRILLING METHOD	
SS - Split Spoon	NQ - Rock Core, 1-7/8"	HSA - Hollow Stem Auger	RW - Rotary Wash
UD - Undisturbed Sample	CU - Cuttings	CFA - Continuous Flight Augers	RC - Rock Core
AWG - Rock Core, 1-1/8"	CT - Continuous Tube	DC - Driving Casing	